

Make light work of all your heavy lifting needs

Enhanced Reach. Enhanced Strength. Enhanced Reliability

The robust, state-of-the-art Maini Scissor Lift range offers you unparalleled performance and safety, which boosts work site productivity. Ideal for efficient loading/unloading operations, cargo and vertical transfer operations for warehouses and factories, Maini Scissor Lifts are manufactured using premium quality components and advanced technology that gives your business the lift it needs. All Lift Tables are designed and manufactured as per ANSI+MH29.1-2012.

Lift your business to greater heights



Available in floor and pit mounted versions, these scissor lifts are designed to match the ground level area with the functional loading area associated with vertical transfer operations. Hollow scissor legs and a full-length deck support minimises the deflection. A precision velocity fuse on each hydraulic cylinder eliminates platform free-fall. Sturdy rails, lips and barrier chains are provided at both ends for the operator's safety.

Limit switch for height cut-off is provided. Tow guard is standard along with the railing for enhanced safety

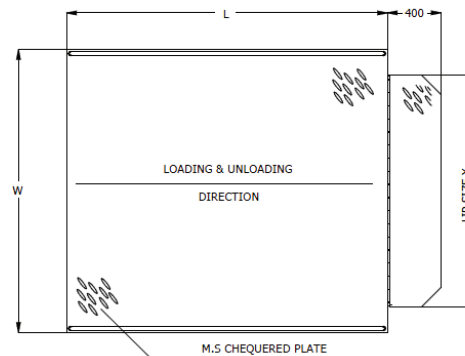
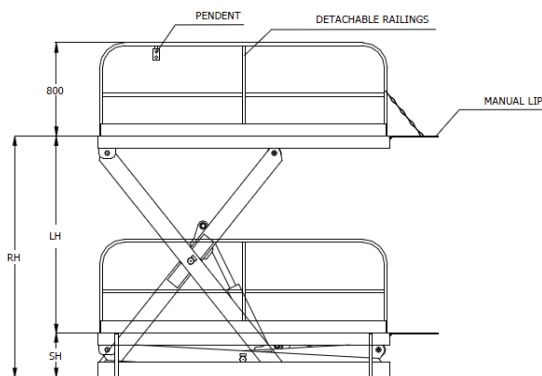
- Capacity: 2000 - 5000 kg
- Lift Height: Upto 1800 mm
- Power Packs are 3 Phase, 415V and 50HZ as Standard

Stationary Scissor Lifts from Maini

Optional Features

- Double Acting Hydraulic Cylinder for Enhanced Productivity
- 24 V DC Power Pack for Enhanced Safety

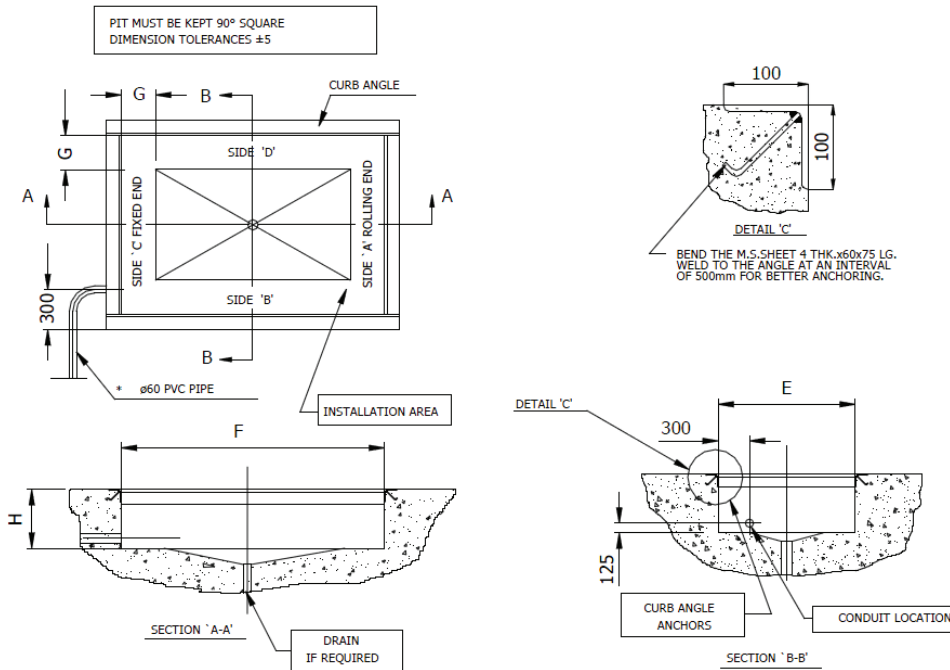
Dimensional Specifications



Technical Specifications

GENERAL ASSEMBLY NO.	DECK SIZE [mm]		LIFT HEIGHT LH [mm]	SHUT HEIGHT SH [mm]	CAPACITY [kg]	LIP SIZE X [mm]	POWER PACK [HP]
	L	W					
50021105	1500	1500	1000	300	1500	1400	3
50021299	2500	2200	1600	375	2000	1800	3
50021103	2500	2200	1600	375	3000	1800	5
50021104	2500	2500	1600	375	3000	1800	5
50021028	3000	2200	1800	425	3000	1800	5
50021041	3000	2500	1800	425	3000	1800	5
50020713	2500	2500	1600	425	5000	1800	5
50021106	3000	2200	1800	450	5000	1800	5
50021107	3000	2500	1800	450	5000	1800	5

Pit details – Scissor lifts



Dimensional Specifications

GENERAL ASSEMBLY NO.	F [mm]	E [mm]	H [mm]	G [mm]
50021105	1575	1550	305	300
50021299	2575	2250	385	400
50021103	2575	2250	385	400
50021104	2575	2550	385	400
50021028	3075	2250	435	400
50021041	3075	2550	435	400
50020713	2575	2550	435	400
50021106	3075	2250	460	400
50021107	3075	2550	460	400

Note:

- Curb angle size: ISA 100*100*10thk
- Installation area of the pit floor must be kept at a level
- Curb angle anchor centre distance 'G' maximum
- A 60mm conduit for the hydraulic hose has been provided
- Routing of house as per power pack position customer to decide
- Hydraulic hose length from the cylinder to the power pack will be 8.5 m
- Cable length from the power pack to the control panel will be 5 m

S Series scissor lifts



S Series scissor lifts are mounted on locating cradles and wear plates. Its extremely low profile provides added versatility for ground level loading/unloading operation. In addition they have a flexibility to be installed anywhere in the factory/warehouse.

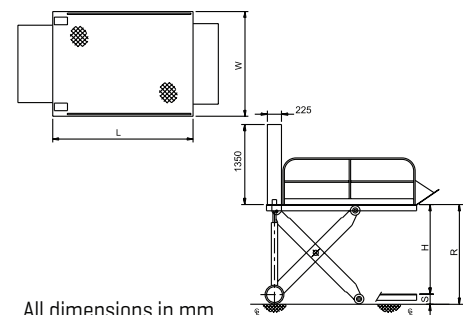
S series tables are available in two standard sizes, fitted with 3/5 hp power pack.

Technical Specifications

S SERIES				
DECK SIZE [MM] [L X W]	LOWERED HEIGHT [S]	LIFT HEIGHT [H]	RAISED HEIGHT [R]	CAPACITY [KG]
2400X 1800	125	1400	1525	2500
2400 X 2100	125	1400	1525	2500

Capacity : 2500 kg
Lift Height : Up to 1400 mm

Dimensional Specification



Custom Specific Lift Tables

- Maini specializes in design, manufacturing, and certification of customer specific needs
- Sizes range from 3000mm to 7000mm length and 2500mm to 3000mm width, with a lift height of 6000mm
- Lifting capacity range from 1 -10 tons