

Simplifying Operations

Maini's manual range includes equipment for **manual floor transportation & lightweight stacking applications**. Pallet trucks are **efficient & simple** mode of transporting palletized loads in the shop floor. They are manually operated and come in different variants to suit desired applications. Manual stackers are used for light stacking applications. These are perfect for narrow aisle operations because of their **small turning radius**.

Easy Maintenance

12 lubrication grease nipples on all movable parts for easy maintenance

Enhanced Productivity

Manual high lift offers efficiency and versatility

Higher Safety

Automatic activation of self adjusting stabilizers at loads higher than 400mm, for greater stability

Easy Loading

Loads can be easily placed at required ergonomic work height

Operator Comfort

An economical lift to handle tasks from transporting dies, moulds, skids & pallets. It allows the operator to work without having to perform extreme body movements.

FEATURES



EASY OPERATION

Entry / Exit rollers for effortless operation



RESPONSIVE HYDRAULIC SYSTEM

The hydraulic pump is easy to operate and has an in-built automatic neutral position



FIRM ANCHORING

Supporting clamps in front of the rollers to reduce risk of tipping over



WEIGHING SCALE DISPLAY UNIT

Weight indication on the display can be pounds or kilogram



ROBUST STABILITY

Side stabilizers ensures equipment remains stationary while used as worktable



Look for the embossed Maini logo to ensure genuine product purchase

TECHNICAL SPECIFICATIONS - PV SERIES

Lift per stroke	12 mm		
Weight	67 kg		
Wheels			
Steer	Nylon [2] : 200 x 50mm		
Load tandem	Nylon [4] : 80 x 70mm		
Options			
Load wheels	Polyurethane / Steel		
Steer wheel	Polyurethane / Rubber / Steel		
Standard Frames			
Dim. A	Dim. B	Dim. C	Dim. L
mm	mm	mm	mm
1150	520	200	1510
1150	685	365	1510

TECHNICAL SPECIFICATIONS - SHP10 SERIES

Capacity	1000 kg
Total lift height	810 mm
Lowered fork height	85 mm
Fork Length	1220 mm
Width over the forks	550 mm
Height of handles	975 mm
Steering wheel	200 X 50 mm
Fork wheel	74 X 50 mm
Truck weight	112-115 kg

HYDRAULIC HAND PALLET TRUCK PV SERIES

The PV is light weight hand pallet truck with a steering angle of 210 degrees. Weighing only 67 kg, it offers an unmatched weight to capacity ratio. It is designed for easy manoeuvrability, particularly in confined areas.

CAPACITY
2000kg



PV20 EWS

Electronic Weighing Scale: Provided with an integrated weighing scale with printers as an option

CAPACITY
2500kg



PV25 SS/G

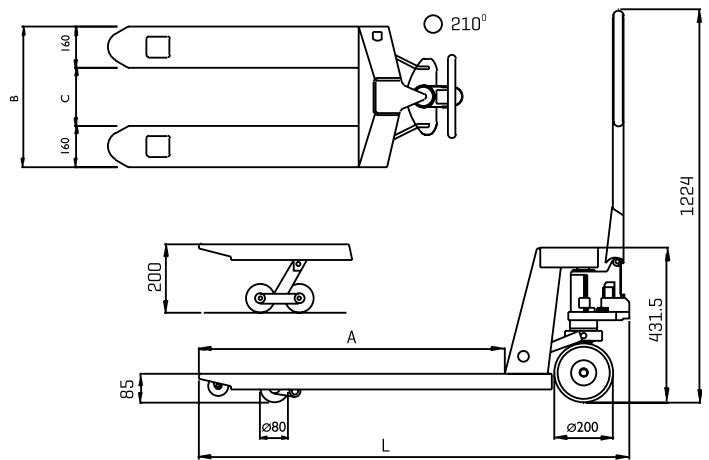
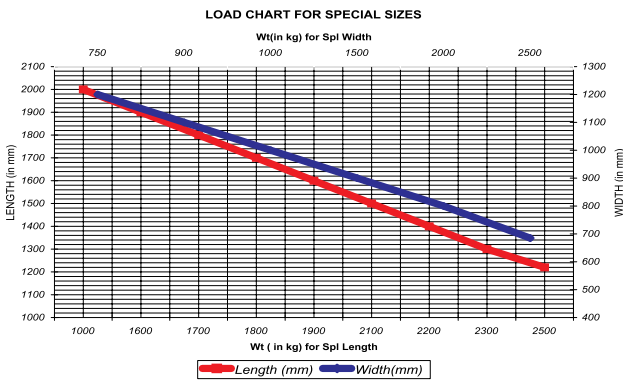
Stainless Steel/Galvanised: For use in damp and corrosive environments. Ideal for chemical, paper, leather, food processing industries and cold storage

CAPACITY
1200kg



PV12 PRV

Paper Roll Vesion: Useful for carrying cylindrical loads such as paper rolls and drums [750 mm -1200 mm diameter]



CUSTOM MADE MODELS FOR SPECIAL APPLICATION

- Low profile version [35mm-52mm lowered fork height]
- Pallet truck for rough terrain application
- Special sizes to suit application

SCISSOR HAND PALLET TRUCK SHP10 SERIES

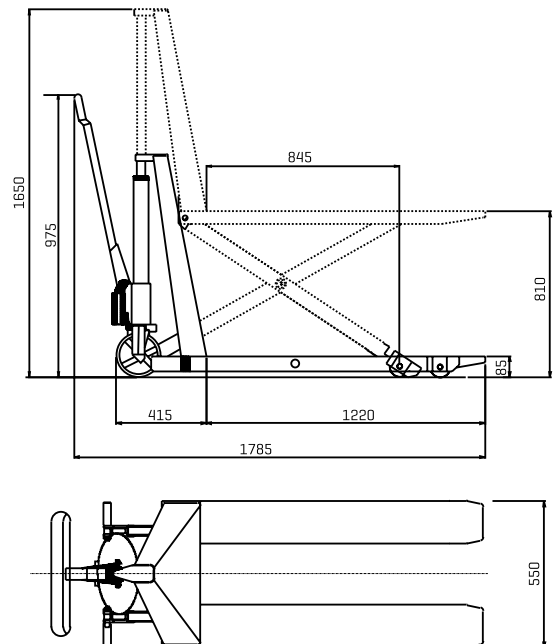
SHP combines the applications of a hand pallet truck and an adjustable work table. The pallet can be positioned at a desired height while working. SHP enables the operator to move the pallet truck upon completion of work. A battery version is also available as SHP10 B.



SHP10



SHP10 B



All dimensions in mm.

MANUAL STACKER

MS10



MS10

CAPACITY
1000kg

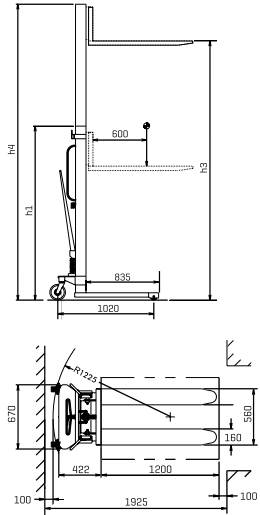
Model : **MS10**
Capacity : **1000kg**

- Light, sturdy and manoeuvrable
- Ideal for operations in narrow aisles, mezzanines & busy gangways due to its compact design & small turning radius
- Perfect for operations where lifting is primary & transport distance is short

OPTIONS

- Load Platform
- PU wheels

Dimensional Specification



SEMI ELECTRIC STACKERS

MS-B SERIES



MS10 B

CAPACITY
1000kg

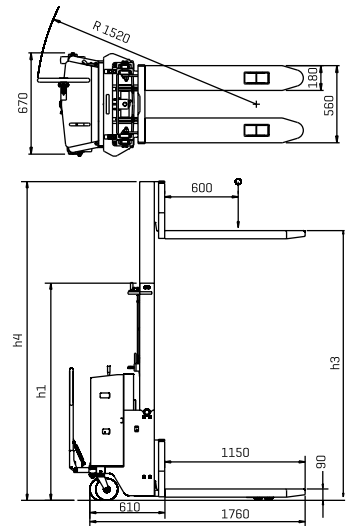
Model : **MS10 B**
Capacity : **1000kg**
Lift height : **Up to 3100mm**

- Light, manoeuvrable and stable
- Ideal for in-plant operation which require frequent lifting & lowering of loads
- Lift function is electro hydraulic while movement is manual

OPTIONS

- Load Platform
- Parking brake
- PU wheels
- Battery Discharge Indicator

Dimensional Specification



WHEELS			TECHNICAL SPECIFICATIONS		MS10		MS10 B SPL	
Support	Nylon (2)	180 x 50 mm	Lift Height	h 3	1600	2450	2850	3100
Load	Nylon (2)	82 x 70 mm	Lowered Height	h 1	2000	1780	2080	2180
			Raised Height	h 4	2000	2920	3400	3650
			Fork Dimensions		1150 X 560			

All dimensions in mm.