

ELECTRIC STACKERS ST15 SERIES



ST15 [Standard]

Model : **ST15**
Capacity : **1500 kg**
Lift height : **Up to 6300 mm**

- Versatile stacker, useful in almost all industrial work environment
- Ergonomically designed for enhanced productivity and safety
- Ideal for operation in narrow aisles and busy gangways due to compact design and small turning radius
- Ability to undergo highly intensive stacking and transportation in minimum time
- Battery Discharge Indicator with Pump Lockout and Hour Meter

OPTIONS

- Load Platform
- Load Backrest
- Battery Change Trolley
- Beacon & Overhead Guard
- Reverse Beeper
- Fork Extensions
- Special Fork Sizes & Special Mast Types



ST15 WC [Wide Chassis]



ST15 SS



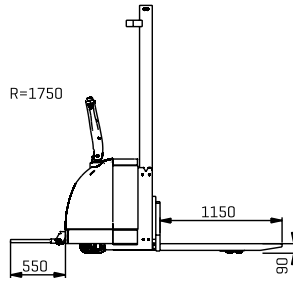
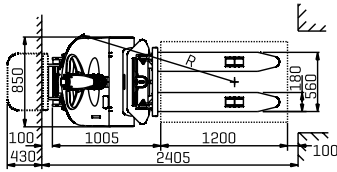
ST15 SS FFTL



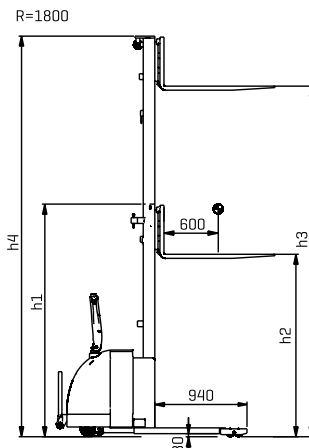
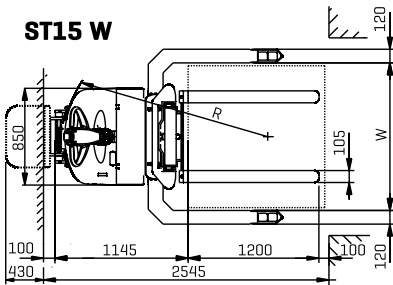
ST15 W

DIMENSIONAL SPECIFICATION : ST15 SERIES

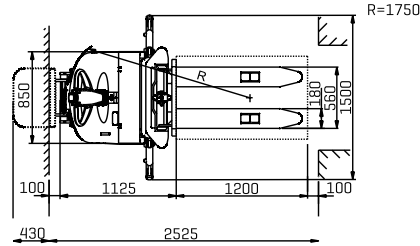
ST15 Std



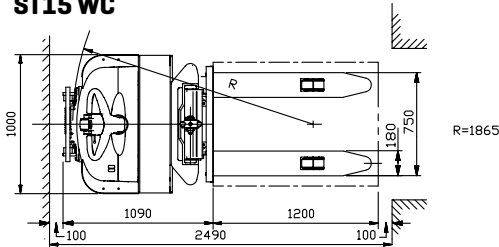
ST15 W



ST15 SS



ST15 WC



All dimensions in mm.

MAST PROGRAM

MONO & TELESCOPIC MASTS

Lift (h3) mm	Height mast lowered (h1) mm	Height mast extended (h4) mm	Capacity at 600 mm L.C. kg				
			ST15	ST15 W	ST15 SS	ST15 CS	ST15 WC
1580	2035	NA	1500	1500	1500	-	1500
1600	2100	NA	-	-	-	2000*	1500
2000	1600	2570	-	-	-	2000*	-
2450	2130	3310	1500	1500	1500	-	1500
2850	2130	3510	1150	1500	1425	-	1400
3100	2130	3635	1050	1500	1375	-	1350
3350	2380	4010	970	1450	1300	-	1275
3600	2380	4135	890	1400	1250	-	1225
3900	2745	4650	800	1350	1180	-	1150
4200	2745	4800	720	1200	1130	-	1100
4500	3050	5255	-	1180	1060	-	1000
4800	3050	5390	-	1050	1000	-	950

FULL FREE TRIPLE LIFT MASTS

Lift (h3) mm	Height mast lowered (h1) mm	Height mast extended (h4) mm	Free lift (h2) mm	Capacity at 600 mm L.C. kg			
				ST15	ST15 W	ST15 SS	ST15 WC
3600	2025	4325	1300	790	1500	1350	1500
3900	2025	4525	1400	670	1420	1290	1300
4200	2025	4725	1500	580	1310	1230	1200
4500	2455	5220	1735	-	1240	1170	1100
4800	2455	5420	1835	-	1160	1100	1050
5100	2455	5620	1935	-	1090	1040	1000
5400	2755	6120	2035	-	1010	980	950
5700	2755	6320	2135	-	920	920	800
6000	2755	6520	2235	-	860	850	600
6300	2855	6825	2335	-	750	700	700

Capacities indicated with the battery weight of 285 kg

FULL FREE LIFT MASTS

(h3) mm	(h1) mm	(h4) mm	(h2) mm	Capacity kg
2850	2005	3385	1520	1150
3100	2130	3635	1650	1050
3350	2255	3885	1780	970

Capacities of W and SS versions remains 1500 kg for the above lifts
*1000 Kg per level



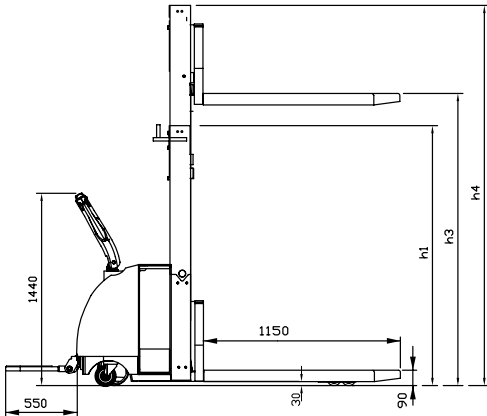
ST12

Model : **ST12**
Capacity : **1200 kg**
Lift height : **Up to 4200 mm**

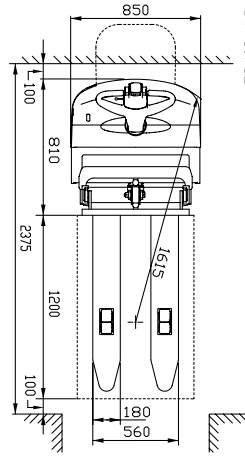
- Light duty applications
- Better economy & performance
- Wheel configuration ensures positive traction for firm grip and better stability
- Battery Discharge Indicator with Pump Lock out and Hour Meter

OPTIONS

- Load Backrest
- Battery Change Trolley



All dimensions in mm.



ST-10/12

MAST PROGRAM - ST12			
Lift (h3) mm	Height mast lowered (h1) mm	Height mast extended (h4) mm	Capacity at 600 mm L.C. kg
1580	2035	NA	1200
2000	1600	2555	1200
2450	2106	3290	1200
2850	2106	3490	950
3100	2106	3620	800
3350	2400	4030	700
3600	2400	4155	550
4200	2700	4755	450

COUNTER BALANCED STACKERS SC SERIES



CAPACITY
1800kg

Lift height up to 4200mm

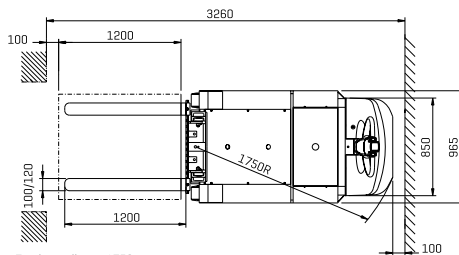
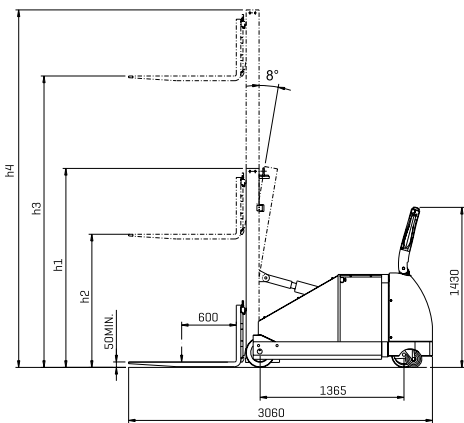
Model : **SC14 / 18**
Capacity : **1000/1400/1800 kg**
Lift height : **Up to 4200 mm**

- Ideal combination of a stacker and forklift
- Features of a sit-down style fork lift without its high costs
- Can handle any type of load
- One vehicle for all operations
- Battery Discharge Indicator with Pump Lockout and Hour Meter

OPTIONS

- Load Backrest
- Battery Change Trolley
- Stand-on Platform

DIMENSIONAL SPECIFICATION : SC SERIES



Turning radius = 1750 mm
Aisle width = 3260 mm
Tilt Angle = 2° Front & 8° Back

All dimensions in mm.

MAST PROGRAM					
MONO & TELESCOPIC MASTS					
Lift (h3) mm	Height mast lowered (h1) mm	Height mast extended (h4) mm	Capacity at 600 mm L.C. kg		
			SC10	SC14	SC18
1580	2005	NA	1000	1400	1800
			1000	1400	1800
2450	2125	3305	1000	1400	1750
			950	1350	1640
2850	2125	3505	1000	1400	1720
			900	1300	1580
3100	2125	3630	1000	1400	1700
			850	1200	1550
3350	2525	4155	1000	1380	1650
			800	1120	1500
3600	2525	4280	1000	1350	-
			750	1050	-
3900	2525	4430	1000	1320	-
			700	1000	-
4200	2675	4730	1000	1300	-
			600	950	-

Values in red indicate capacity in mast tilt option

Your Stacking Expert

Maini's range of stackers are designed to **enhance productivity, ensure safety and optimize returns.** Our comprehensive portfolio has something for every application, accounting for different space limits, load sizes, floor conditions, operation time and other needs.

Maini's command over innovation, engineering and design is fortified by its commitment to quality and dedicated service. In line with its legacy of innovation, Maini's stackers excel through **advanced electronic control, ergonomics & manoeuvrability.**

Ensuring enhanced work-flows and boosted productivity, Maini Stackers are a value addition now as well as in the long run.

With Maini in your facility you can stack heavy loads easily, ergonomically, efficiently and smartly.

Enhanced Safety

Parking brake actuator ensures automatic cut off to power supply

Effortless Speed Control

Micro-processor based motor controller for precise and step-less throttle control programmable for specific needs

Efficient Drive Unit

Powered by AC motor technology in a fully enclosed lubricated gearbox

Electric & Hydraulic System

Single 24 V cross-mounted battery of capacity 330 Ah @ C5, 240 Ah @ C5, 420 Ah @ C5.

2kW pump motor with an integrated reservoir.

Steel piping connects hydraulic components.

Brake valve is inserted to control lowering speed.

FEATURES



Ergonomic Handle ensuring total operator control



Wide & Robust Mass for enhanced & clear visibility



Easy access for service and maintenance



Battery with Roller for Quick Battery Change



Vibration Damped Platform for maximal operator comfort



Easily accessible controls



TECHNICAL SPECIFICATIONS - MAINI STACKERS

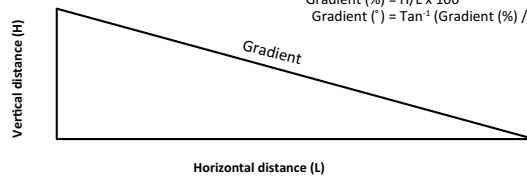
		ELECTRIC						COUNTER BALANCED		
Features	Unit	ST12	ST15	ST15 W	ST15 SS	ST15 FFTL	ST15 WC	SC10	SC14	SC18
Capacity	kg	1200	1500	1500	1500	1500	1500	1000	1400	1800
Pump Motor	[V/kW]	24/2.0	24/2.0	24/2.0	24/2.0	24/2.0	24/2.0	24/2.0	24/2.0	24/2.0
Drive Motor	Kw	1.5	1.5	1.5	1.5	1.5	1.5	1.5	1.5	1.5
Max. Travel Speed	[km/hr]									
Unladen		5.5	6.5	6.5	6.5	6.5	6.5	5	5	5
Laden		4.9	5.5	5.5	5.5	5.5	5.5	4.5	4.5	4
Gradeability	[%]									
Unladen		10	10	10	10	10	10	8	8	8
Laden		8	8	8	8	8	8	4	4	4
Lifting Speeds	[m/s]									
Unladen		0.19	0.14	0.14	0.14	0.11	0.14	0.1	0.1	0.1
Laden		0.11	0.08	0.08	0.08	0.08	0.08	0.08	0.08	0.07
Lowering Speeds	[m/s]									
Unladen		0.19	0.17	0.17	0.17	0.18	0.15	0.11	0.11	0.11
Laden		0.15	0.25	0.25	0.25	0.25	0.25	0.17	0.17	0.18
Battery capacity	[V, Ah]	24,240	24,345	24,345	24,345	24,345	24,345	24,420	24,420	24,420
Net Weight	[kg]									
Without battery		770	945	950	995	965	1050	NA	NA	NA
With battery		990	1230	1235	1280	1250	1250	NA	NA	NA

Wheels		Polyurethane						Polyurethane		
Drive	mm	250 x 80	230 x 75	230 x 75	230 x 75	230 x 75	230 x 75	230 x 75	230 x 75	230 x 75
Castors	mm	150 x 50	150 x 50	150 x 50	150 x 50	150 x 50	150 x 50	150 x 50	150 x 50	150 x 50
Load	mm	82 x 70	82 x 70	82 x 70	82 x 70	82 x 70	82 x 70	265 x 125	265 x 125	265 x 125

Gradient Calculation

$$\text{Gradient (\%)} = H/L \times 100$$

$$\text{Gradient (}^\circ\text{)} = \tan^{-1}(\text{Gradient (\%)} / 100)$$



Please Note :

With the given gradeability (as mentioned in chart), following are the maximum permissible distance on slope:

ST12 series : 13 m

ST15 series : 55 m

SC series : 17 m

